

 **NIPSEA GROUP**

CORPORATE PROFILE



TABLE OF CONTENT

Chapter 1

NIPSEA AT A GLANCE

- The NIPSEA Overview
 - The Strategic Blueprint of Nippon Paint Holdings and NIPSEA Group
 - Brand and Culture
 - Key Milestones
-

Chapter 2

OUR GLOBAL REACH: MARKET LEADERSHIP, PRESENCE AND INFLUENCE

- Market Leadership and Industry Pioneer
 - Our Global Presence
 - Brand Distribution
 - Colour Leadership and Trendsetting
-

Chapter 3

BUSINESS SEGMENT AND SOLUTIONS

- Architectural Coatings: Home Solutions
- Architectural Coatings: Professional Solutions
- Industrial Coatings
- Automotive Coatings

- Marine Coatings
 - Beyond Coatings
 - Sealants, Adhesives & Fillers
 - External Thermal Insulation Composite Systems (ETICS)
 - Flooring Solutions
 - Waterproofing Solutions
 - Mortar & Skim Coat
 - Tile Adhesive & Grout
-

Chapter 4

INSPIRED BY YOU TO BE DIFFERENT

- Innovations, Research and Development
 - Sustainability at our Core
 - Colouring Lives: Corporate Social Responsibility
-

Appendix: Project References



Chapter 1

NIPSEA AT A GLANCE

THE NIPSEA OVERVIEW

NIPSEA Group brings Nippon Paint's innovative paint and coating solutions to more than 28 countries and regions worldwide, making us the largest paint and coatings brand in Asia Pacific. We deliver high-quality coating solutions for various applications, champion innovative ideas, and prioritise customer-centric growth.

At Nippon Paint, we are *Inspired by you*

Globality

- Global footprint and mindset
- Serving localities and ever growing market demands

Innovation

- Research and development
- Investing in new technologies and products to build a better future

Sustainability

- Sustainable practices worldwide
- Environmentally friendly products

Solutions

- End to end total construction solutions
- Beyond Coatings

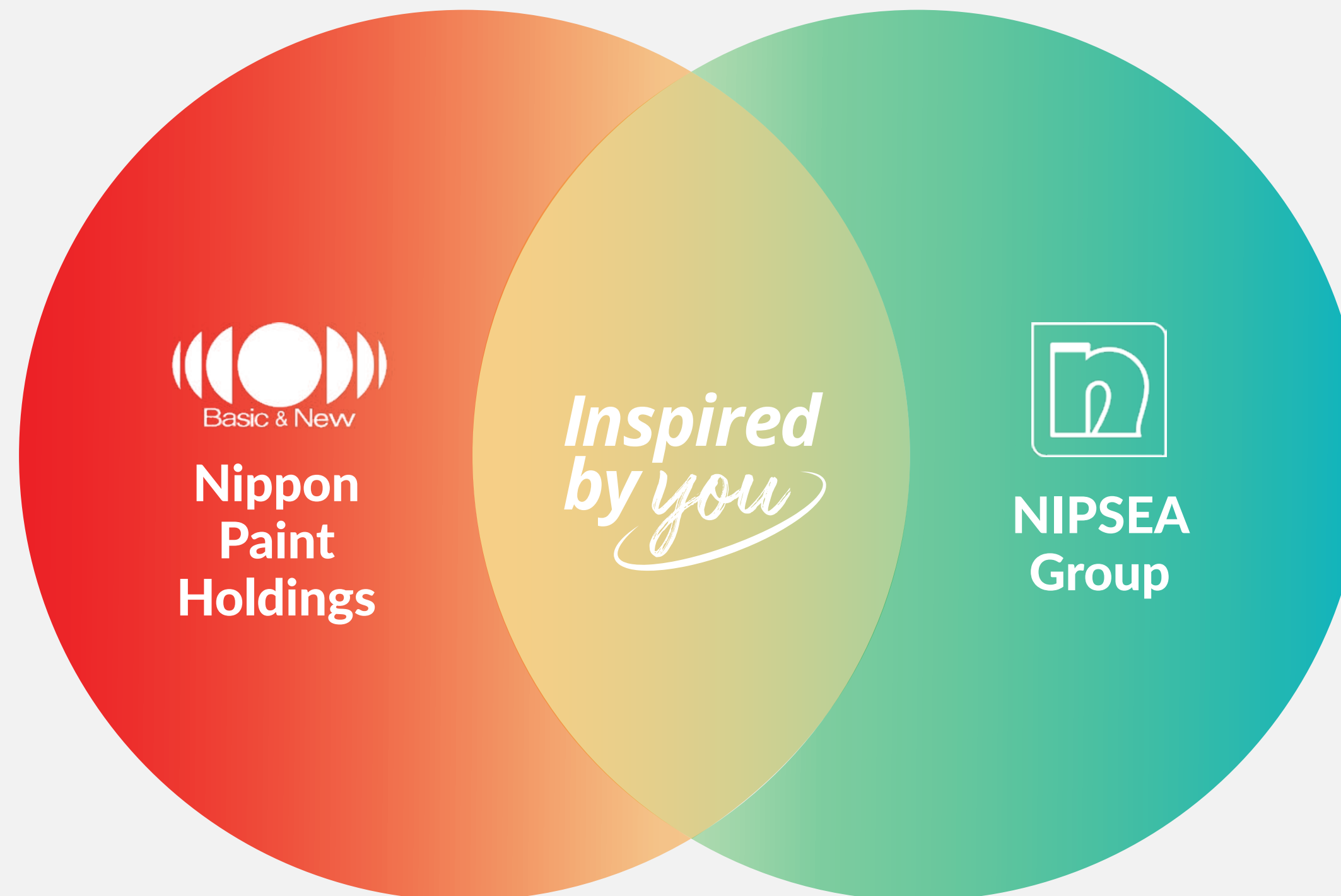
Community

- Serving communities in the regions we operate in
- Investment in our people and communities
- Empowering growth

Bringing Nippon Paint to the Globe:

THE STRATEGIC BLUEPRINT OF NIPPON PAINT HOLDINGS AND NIPSEA GROUP

with its century old deep-rooted heritage and extensive global network, provides a solid foundation for expansion.



with its in-depth understanding of the Asia Pacific market and its ability to tailor products and services to regional preferences, contributes invaluable expertise.

BRAND AND CULTURE

NIPSEA Group: More than just a paint company. We're a catalyst for change, a force for innovation, and a partner committed to your success.

Our dedication to excellence is unwavering, our passion for innovation is infectious, and our commitment to you is absolute.

From the architectural masterpieces we adorn to the industrial marvels we protect, NIPSEA Group's solutions are designed to elevate your business. Keep inspiring us.

NIPSEA Group is steadfast in its commitment to Maximising Stakeholder Value (MSV)

We believe that by fostering inclusive business strategies, driving innovative breakthroughs, and cultivating customer-centric engagements, we can create sustainable value for all our stakeholders.

Our approach is rooted in the belief that by empowering our employees, partnering with our suppliers, and delivering exceptional products and services to our customers, we can achieve long-term success.

Our Vision

Building a sustainable future through customer centric growth.

Our Brand Promise

Innovation with heart and people at our core.

Our Brand Values



Insight Driven

Seek insightful customer understanding through proactive engagement and data mobilisation



Collaboration

Embrace mutual respect, trust and support to establish long-term customer partnerships



Passion for Innovation

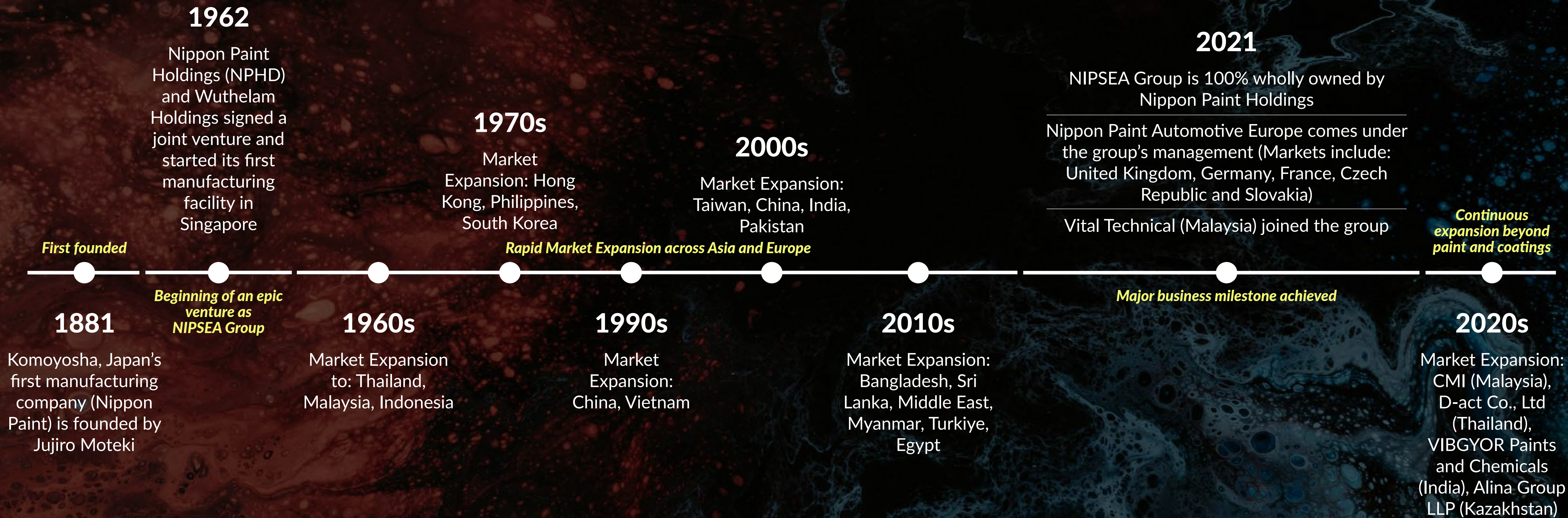
Powerful, purposeful innovation for our customers through continuous learning and education



Strive for Excellence

Commit to deliver quality and excellence through products and services

KEY MILESTONES





Chapter 2

OUR GLOBAL REACH: MARKET LEADERSHIP, PRESENCE AND INFLUENCE



28 COUNTRIES AND REGIONS

spanning across Asia, Europe, and the US

OUR GLOBAL PRESENCE



118 Manufacturing Sites

Country	Manufacturing site(s) in each country
Bangladesh	1
Brazil	1
Canada	-
China	55
Czech Republic	1
Egypt	1
France	1
Germany	1
India	8
Indonesia	3
Kazakhstan	9
Kenya	-
Korea	1
Kyrgyzstan	-
Malaysia	8
Mexico	2
Myanmar	1
Pakistan	1
Philippines	1
Singapore	1
Slovakia	-
Sri Lanka	1
Thailand	6
Turkiye	7
UAE	-
United Kingdom	1
USA	3
Vietnam	3

*Updated as of December 2024.

OUR BRAND DISTRIBUTION

NIPSEA's brand portfolio includes some of the most well-known and respected brands in the industry. These brands are trusted by customers worldwide for their quality, reliability, and performance. The brands includes:

Paint and Coatings



Beyond Coatings



MARKET LEADERSHIP AND INDUSTRY PIONEER



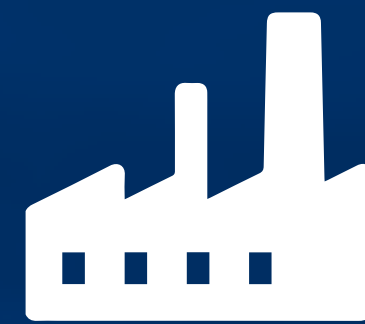
Market Position
ASIA #1
GLOBAL #4

*Largest paint & coatings brand in Asia Pacific in terms of revenue

Source: 2023 top 30 Asia Pacific Coatings Companies

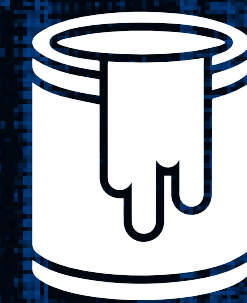
**Global ranking in terms of revenue

Source: 2023 Global Top 10 Top Paint and Coatings Companies



118

Manufacturing Facilities
Complies with international standards



4.7 Bn

Production Volume (Litres)
Produce 4.7 billion of paint and coatings across all manufacturing facilities
*4.7 Bn Litres reported is based on 2023 FY volume



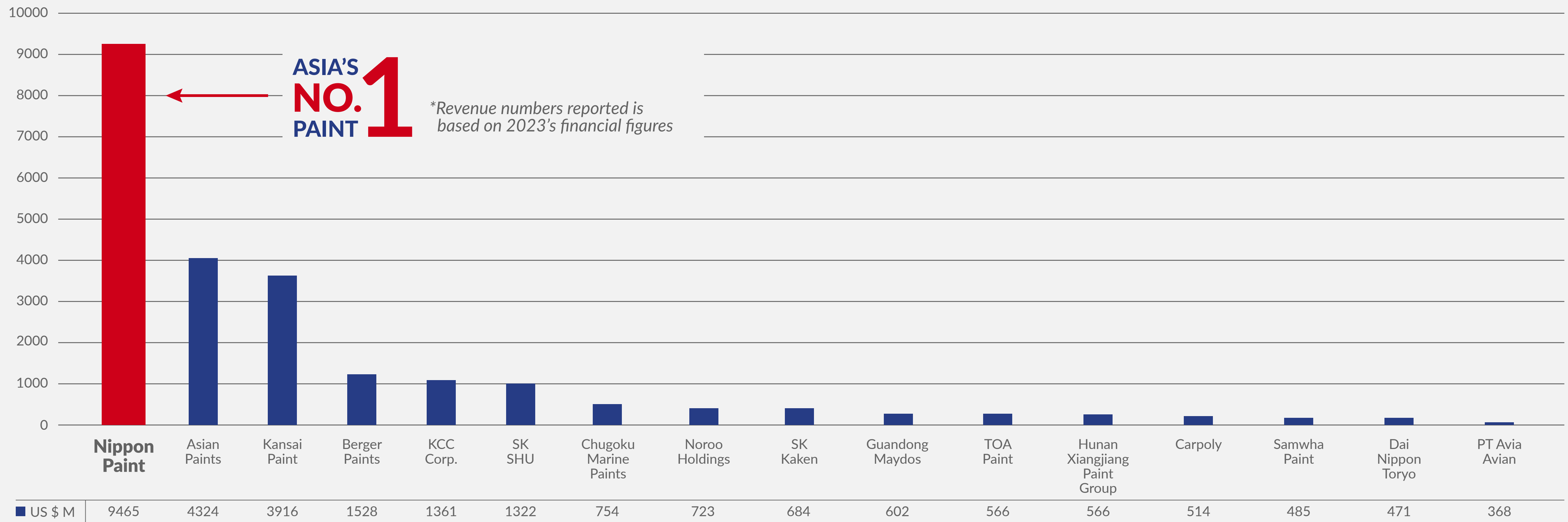
Over
31,196
employees



28

Countries and Regions
Presence in 28 geographical locations and counting

MARKET LEADERSHIP AND INDUSTRY PIONEER



Source: 2023 top 30 Asia Pacific Coatings Companies

COLOUR LEADERSHIP AND TRENDSETTER

When it comes to colour, NIPSEA Group is not just a provider, we are a leader.

Our dedication to providing a diverse range of high-quality colour solutions is unmatched. Our expertise in colour theory, formulation, and application has set the standard in the industry. It enables us to create products that not only inspire creativity and evoke emotions but also set the standard for enhancing the aesthetics of various environments.

Forecasting & Demand Analysis

Our expertise in forecasting and demand analysis allows us to anticipate market trends and provide tailored solutions:

- Global Trend Forecasting:



Working with the Design Community

We collaborate closely with the design community to understand their evolving needs and create immersive colour solutions that inspire creativity.

Celebrating Colour Excellence

Our commitment to colour excellence drives us to continuously push boundaries of the use of colours across various business sectors.

A global award that celebrates purposeful use of colour

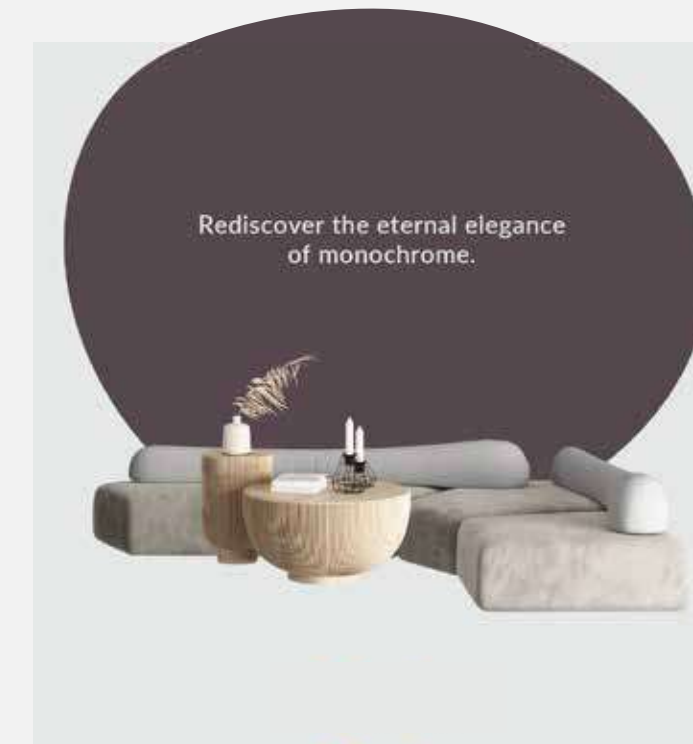




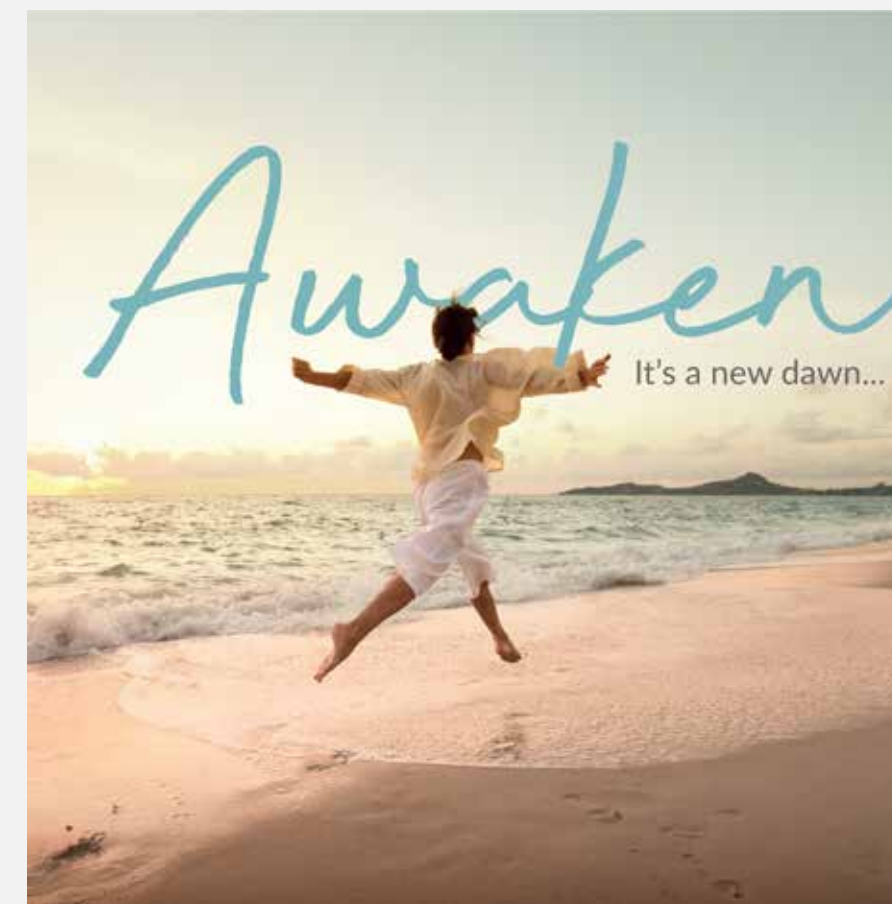
GLOBAL TREND FORECASTING

AWAKEN "It's a new dawn"

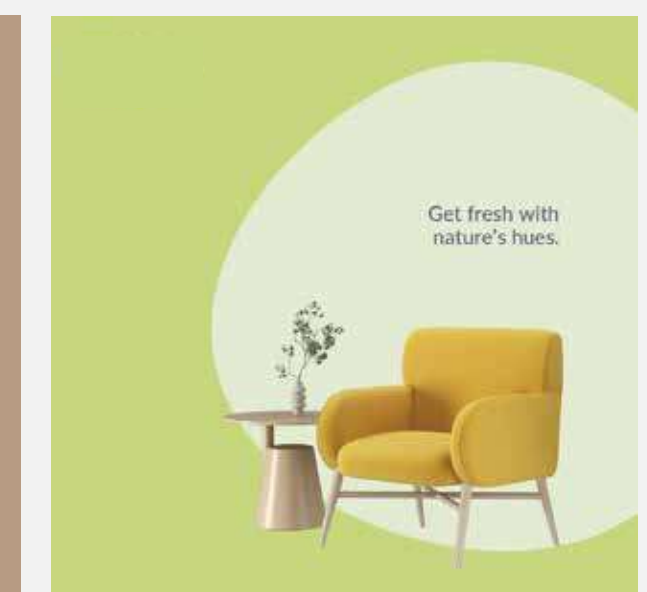
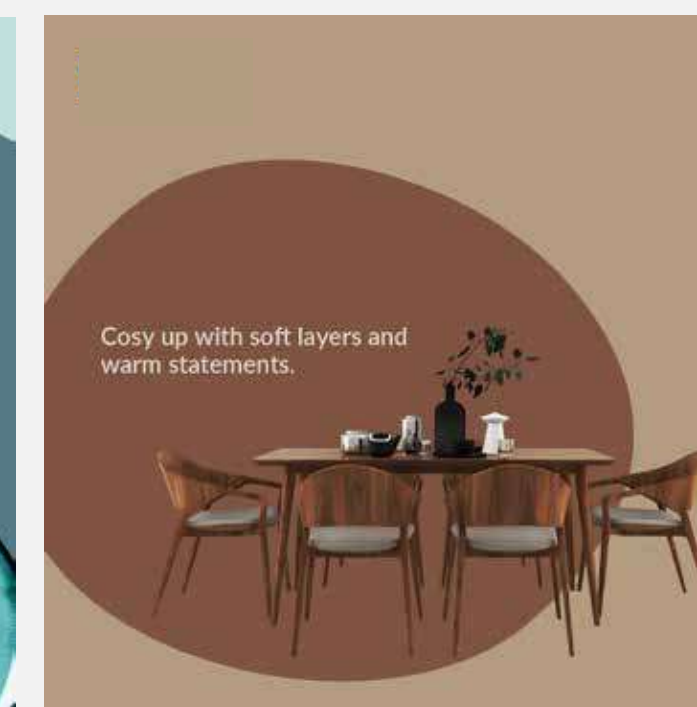
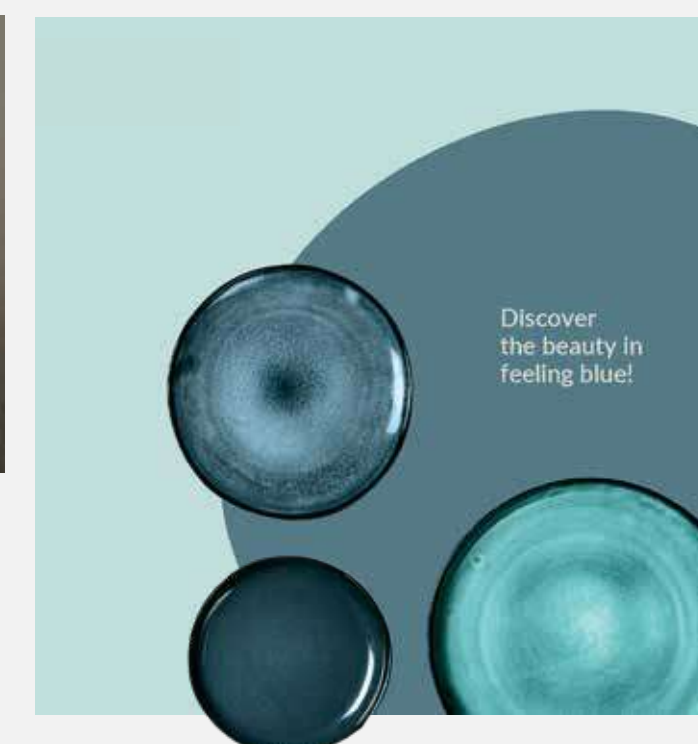
The central theme for Trend Beyond Colours 2024-25 sees us embracing a fresh mindset. We're considering how we can live better, feel better and be better, both as individuals and as part of a global community.



Find out more



Our Inspiring Colours for 2024-2025





A GLOBAL AWARD THAT CELEBRATES PURPOSEFUL USE OF COLOUR

"Celebrating Purposeful Use of Colours"

Colours surrounding us can make a difference in our lives. They can be a powerful medium to signify, solve or signal – a strategic selection process which plays a critical role in designing or recreating a space. We want to recognise that.

The annual Creative Colour Awards is on the search for projects that exhibit innovative, and purposeful use of colours in spatial design. We accept all scales and sizes of project that shows how well colour is used as a design solution. Do check out our judging criteria to understand what our panel of jury are looking for.



Find out more



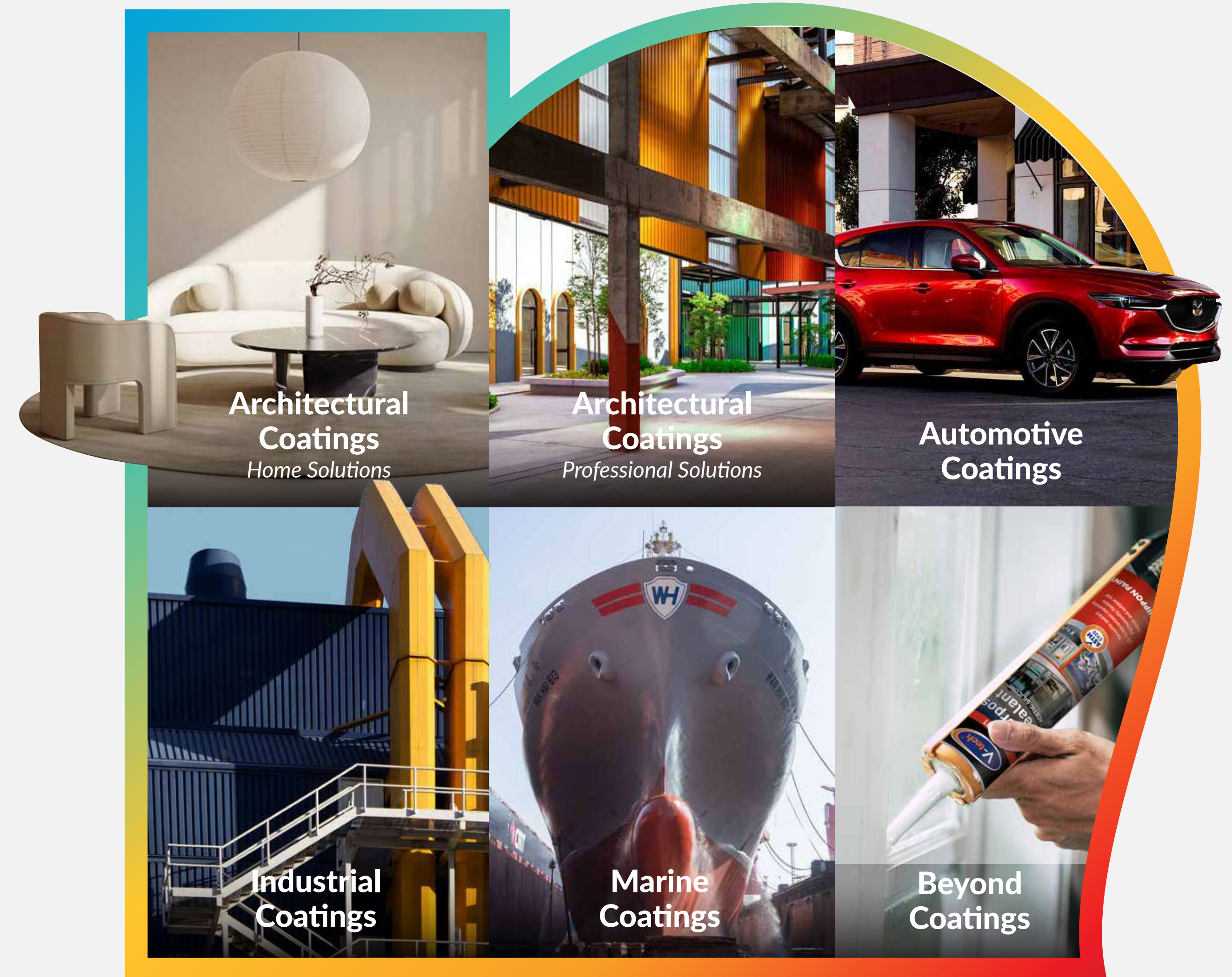


Chapter 3

BUSINESS SEGMENTS AND SOLUTIONS

BUSINESS SEGMENTS

Today, NIPSEA Group provides total solutions for the built environment industry. This includes Architectural, Industrial, Automotive and Marine Coatings, as well as a range of products beyond the world of paint and coatings. We are relentlessly driven to focus on our customers and provide innovations that work better for all our stakeholders.



ARCHITECTURAL COATINGS

Home Solutions

Our wide range of options helps you create the ideal atmosphere for any space, indoors or outdoors, on any surface.

Our products not only enhance your home's appeal but also prioritise your family's safety. With safe, hygienic paints that keep homes fresh, easy to clean, and protected, you can enjoy added comfort and peace of mind.

#PaintAllSurfaces

Our Professional Painting Service is a complete one-stop solution, including colour consultation, on-site and technical inspections, defect rectification, supply and application, and warranty services.

Painting Tools

We provide a full range of construction tools and materials, including:

- Painting tools
- Protective materials
- Anti-cracking materials
- Abrasive materials
- Construction equipment



ARCHITECTURAL COATINGS

Professional Solutions

Our high-performance products deliver durability and weather resistance, perfect for urban landscapes. Urban planners can enhance cityscapes with a variety of visually appealing options.

Architectural Paints

We offer trade-use paints for high-rise buildings, factories, hospitals, community centres, and bridges. Our solutions enhance logistics efficiency, product performance, and address environmental and infrastructure needs.

Protective Coatings

Designed for heavy-duty applications, our coatings protect bridges, petrochemical equipment, port machinery, pipelines, tanks, power plants, and steel structures. Solutions include fireproofing and anti-corrosion coatings for metal and concrete.



INDUSTRIAL COATINGS

General Industrial Use (GIU) Coatings

Our coatings cater to a wide range of materials, including steel, aluminium, glass, plastic, and wood. They are used across industries such as construction, farming machinery, engineering, power plants, wind turbines, locomotives, motorcycles, and shipbuilding.

Powder Coatings

As a leading powder coating supplier, we have helped define national standards for surface treatment in construction. With four production bases, nearly 50 production lines, and an annual capacity of 32,000 tons, we provide innovative and reliable solutions.

Coil Coatings

We deliver colour and functional enhancements for construction materials and home appliances.

Industrial Protective Coatings

Our coatings are trusted for bridges, stadiums, airports, high-rises, and heavy equipment in power, petrochemicals, mining, and ports. The range includes zinc-rich, epoxy, polyurethane, fluorocarbon, fireproof, high-temperature resistant, alkyd, and chlorinated rubber coatings.

These solutions meet diverse substrate needs, including steel, galvanised steel, and concrete.



AUTOMOTIVE COATINGS

We drive innovation in the automotive industry, offering advanced solutions tailored to manufacturers' needs. Our cutting-edge CyGLAZ® technology enhances vehicles with superior scratch and chemical resistance, delivering a lasting shine. We also collaborate with manufacturers to develop eco-friendly car production solutions.

Automotive Refinish

Leveraging our group's technology and colour expertise, we deliver high-quality finishes and repairs across waterborne and solvent-borne coatings. Serving over 25 countries, our products cater to all market segments, from high-end to value-based.

Designed for speed, efficiency, and ease of application, our solutions enhance profitability for end users and partners alike. We also provide light industrial and commercial vehicle painting systems, opening new possibilities for excellence in the automotive refinish industry.



MARINE COATINGS

At Nippon Paint Marine, we've pioneered the development of market leading marine coatings solutions for more than a century.

Our innovation is inspired by your evolving needs. We understand the challenges you face in driving vessel performance and accelerating the path to decarbonisation and wider sustainability.

So, at Nippon Paint Marine, we make your challenges our own; guiding you on the best solutions to improve operations, increase efficiencies, reduce costs and emissions and protect your most valuable assets under the harshest of conditions.

Our team is by your side throughout the lifetime of your asset, providing technical, training and ongoing monitoring services to ensure its continued integrity and performance.





BEYOND COATINGS

**Sealants, Adhesives
& Fillers**



**External Thermal
Insulation Composite
Systems (ETICS)**

Flooring Solutions



**Waterproofing
Solutions**

Mortar & Skim Coat



Tile Adhesive & Grout

BEYOND COATINGS



Sealants, Adhesives & Fillers

Through our Selleys and V-tech brands, we provide premium adhesives, fillers, lubricants, and sealants for household and construction needs. Offering end-to-end solutions, we empower homeowners, tradespeople, and professionals to enhance their spaces with confidence. Iconic products include Selleys Supa Glue, Liquid Nails, No More Gaps, RP7, and Blockade.



External Thermal Insulation Composite Systems (ETICS)

ETICS is an exterior application obtained by applying multiple thermal insulation system components directly to the façade. The external thermal insulation system consists of adhesive, board, plaster, dowels, reinforcement meshes, coating primer, mineral coating, paint primer and paint components. The Building Materials Regulation produces ETICS and performs to the highest technical specifications.

BEYOND COATINGS



Flooring Solutions

Our flooring solutions are designed to meet the highest requirements in various industries, such as assembly manufacturing, electronic appliances, food and beverages, pharmaceutical factories, chemical plants, logistics, and warehousing.



Waterproofing Solutions

Water seepage and leakage is a problem faced by many property owners. Therefore, we work alongside architects, contractors, and owners to develop innovative solutions for construction projects. Our range includes bituminous membranes, synthetic membranes, water-stops, polyurea and cementitious slurry.

BEYOND COATINGS



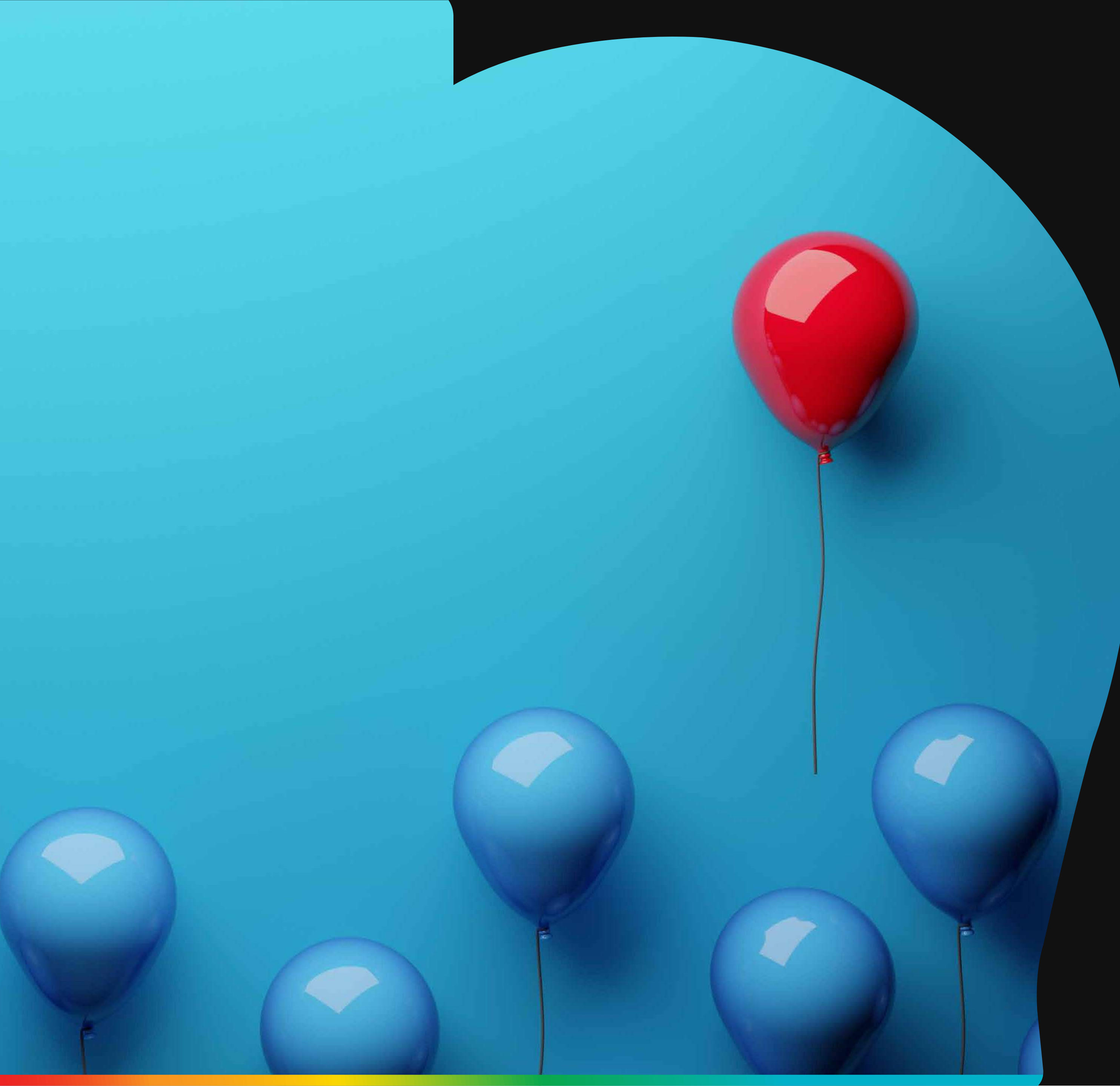
Mortar & Skim Coat

A smooth and level surface plays a critical role in every aesthetic finish. Our research and development team regularly conducts research to deliver quality solutions. Our dry-mix range includes pre-packaged cementitious finishing products, such as plasters, renders, skim coats, floor screeds, bonding agents, and more.



Tile Adhesive & Grout

From installing a ceramic floor to tiling a bathroom, we have a range of adhesives and grout to meet all your specification requirements. Our range covers tile adhesive & grout, water-resistant putty, mould remover, filler, waterproof products for tile installation and accessories such as joint tape, wash tape and putty knife.



Chapter 4

INSPIRED BY YOU TO BE DIFFERENT



INNOVATIONS, RESEARCH AND DEVELOPMENT

INNOVATION, RESEARCH & DEVELOPMENT

NIPSEA Group is committed to driving innovation and fostering excellence in research and development. Our dedicated scientists and engineers continuously explore new technologies and materials to create cutting-edge solutions that meet the market's evolving needs. Over the years, our R&D efforts have led to significant breakthroughs. By investing in R&D, we can stay ahead of the curve and deliver superior solutions that enhance our consumers' livelihood.

Manufacturing Facilities

Our state-of-art manufacturing facilities enable us to deliver high quality solutions across business segments and market needs.



R&D Centre of Excellence

Our highly specialised R&D centre is a hub of innovation where our dedicated specialists, scientists and engineers collaborate to continuously develop groundbreaking solutions



Production Optimisation

Through ongoing product optimisation, we strive to enhance performance, efficiency and meet the evolving demands of our customers



INNOVATION AT THE HEART OF OUR BUSINESS

Our unwavering commitment to driving innovation and expanding our R&D capabilities is rooted in our mission to improve lives and create a better future for all. As of 2023, we have established 56 R&D technical centres across the world, a testament to our global reach and impact, dedicated to serving our domestic and global customers.

NIPSEA Group's R&D Innovation Centre in Shanghai is not just a workplace, but a vibrant knowledge hub and our gateway to customer-inspired innovations. The Centre houses more than 200 experienced professionals across various fields, fostering a culture of continuous learning and growth. We are building a campus in the R&D Innovation Centre in Shanghai, where we aim to employ more than 300 R&D and Innovation professionals by 2025.

We also have an R&D Centre in Singapore, a hotbed of colour technology innovation, primarily serving the Association of Southeast Asian Nations (ASEAN) market. This strategic focus on colour technology promises an exciting future for our company and the ASEAN market.

Singapore

ASEAN R&D CENTER

- Colour Technology

Shanghai

GROUP CORE R&D

- Colour Technology
- Advanced Materials
- Process Technology
- Measurement Science

GROUP INNOVATIONS

- Architectural Coatings
- Automotive Coatings
- Industrial Coatings
- Frontier Technology



PERFORMANCE AND FUNCTIONALITY

Hybrid engine technology to decompose formaldehyde

Formaldehyde-Buster 3in1 interior latex paint utilises Hybrid-Engine independent-technology. Distinct from the traditional product, this product effectively scavenges free formaldehyde in the air using anti-formaldehyde emulsions and agents. The VOC emission level meets both A+(France) and the US Green Guard Certification, and it obtains properties such as mildew resistance, alkali resistance, and scrub resistance, making it suitable for indoor areas, commercial area decoration, and renovation.

Enhancing Design Efficiency

TuffLac and BeudLac are scratch-resistant coating films commonly applied to car surfaces today. To significantly enhance their scratch-resistance performance, Nippon Paint developed the CyGLAZ® technology—a novel class of polymer with hyper-branched, near-3D symmetrical molecular architecture. This technology, when incorporated into the coating films, creates a uniform network with a high crosslinking density, thereby increasing the coating films' structural integrity and the coating layer's toughness.

The technology also boasts unique re-flow characteristics. These characteristics enable the coating film to 'self-heal' when stressed, offering a comprehensive protective solution against scratches while maintaining long-lasting gloss retention.

An architectural rendering of a sustainable city. The scene features several tall, modern skyscrapers with glass facades and balconies. Many of the buildings have lush greenery on their rooftops, including trees and shrubs. In the foreground, there is a dense forest of various trees, including palm trees, and a winding path. The overall atmosphere is one of a harmonious blend of urban development and nature. The image is framed by a white, stylized outline that resembles a speech bubble or a callout box.

SUSTAINABILITY AT OUR CORE

PAINTING THE WAY FORWARD

At NIPSEA Group, sustainability and environmental, social, and governance (ESG) are not just buzzwords but integral to our business philosophy. We don't just talk about minimising our environmental footprint; **we take action by adopting sustainable practices, reducing waste, and promoting energy efficiency.** We don't just prioritise social responsibility, we live it by ensuring fair labour practices and supporting community development initiatives.



Environment and Safety

- Energy & Emissions Reduction Strategy
- Water Conservation Strategy
- Waste Conservation Strategy
- Workforce Safety & Well-being



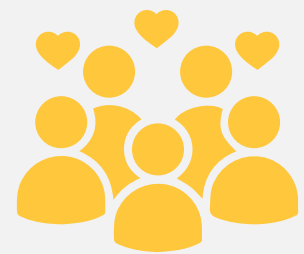
Innovation and Product Stewardship

- Sustainably Advantaged Products
- Product Safety Design



Sustainable Procurement

- Supplier Selection & Assessment
- Supply Chain Resilience



People and Community

- Diversity & Inclusion
- Training & Development
- Community Impact



Governance

- Corporate Governance
- Risk Management
- Stakeholder Management



Read our latest Sustainability Report here



ENVIRONMENTALLY RESPONSIBLE PRODUCTS



Energy-saving and heavy metal-free electrophoretic paint

The ACECRON® 130TF E-coat, is an industry-leading electrophoretic paint that cures at 130°C without adding heavy metals such as lead and tin. ACECRON® 130TF provides excellent film appearance, workability, bath stability and corrosion resistance. It has been successfully adopted by one of China's largest compressor providers. It helps customers to reduce energy consumption and increase productivity without oven upgrading and reconstruction. ACECRON® 130TF E-coat achieves REACH and RoHS Compliance and helps meet the requirements of customers all over the world.

Reducing energy consumption and ensuring minimal product waste

Ultra-low curing temperature powder coating was developed to save energy and boost production for Agricultural, Construction and Equipment ("ACE"). When compared to the traditional coatings with standard curing temperatures of 180-200°C for 10-15 minutes, this innovative product NPD ACE ULT can be cured at as low as 130°C for 30 minutes or 140°C for 20 minutes or only 5-6 minutes with standard curing temperatures of 180°C, achieving excellent appearance, storage stability and protection against chemicals, corrosion, and weathering. The reduction in temperature allows coating applicators to reduce their energy consumption and increase line outputs. Moreover, powder coatings contain no solvent, and the application process results in minimal product waste.



ENVIRONMENTALLY RESPONSIBLE PRODUCTS



Reducing Energy Usage with Infrared-Reflective Paints

A cool paint solution embedded with infrared (IR)-reflective technology to reflect IR radiation from the sun away from horizontal (rooftops) and vertical (building facades) surfaces and into the atmosphere. This reduces thermal heat accumulation on the surfaces, reducing indoor temperatures by up to 5°C.

Buildings painted with the IR-reflective solution will thus require lower energy consumption due to the decreased need for air conditioning. This is because the solution effectively reduces the thermal heat accumulation on the surfaces, thereby reducing indoor temperatures by up to 5°C. This not only saves energy but also presents occupants with greater thermal comfort.

Enhancing Design Efficiency

MonoShine™, a high-solid waterborne technology that utilises a unique crosslinking system to combine the primer, basecoat, and clearcoat into a single film, as opposed to the conventional layer-by-layer coating system.

It allows for a rapid coating process that reduces the energy consumption required, the amount of volatile organic compounds (VOCs) emitted, and less raw material input while maintaining a quality high-gloss finish. Altogether, it presents both environmental and significant cost efficiencies, making it a financially prudent choice for your projects.

The technology can adapt to various temperature and humidity fluctuations to achieve stable coating quality throughout the year, making it applicable across multiple construction project types. At present, our paints that incorporate MonoShine™ are now the preferred coating solution for commercial vehicle applications.



ENVIRONMENTALLY RESPONSIBLE PRODUCTS



NP SunRise® 3C: Advancing Sustainability in Electronics

We are committed to developing next-generation solutions that address environmental challenges while meeting market demands. Our Advanced Coatings Business Unit introduced NP SunRise® 3C, a sustainably advantaged coating line for the 3C industry (computers, communications, and consumer electronics). This product range emphasises the recycling and reuse of non-hazardous components, offering low-VOC, high-solid, oil-based, and water-based options. By reducing the use of harmful substances and chemical raw materials, NP SunRise® 3C supports green development in the 3C sector, empowering consumers with safer and more eco-friendly products.

ENVIRONMENTALLY RESPONSIBLE PRODUCTS



Innovative Bio-Based Polyurethane Resin: A Sustainable Breakthrough

We are actively addressing the environmental challenges posed by petroleum-based products and the limited supply of natural alternatives like lacquer through advanced bio-based technology. Our high-solids-content waterborne polyurethane resin is a game-changer, offering exceptional flexibility, superior film formation, and outstanding hydrolysis resistance.

This cutting-edge resin transforms the automotive industry by delivering excellent adhesion, stone chipping resistance, and water repellency—making it ideal for thin film coatings in demanding applications. Additionally, its versatility extends to wood furniture and interior coatings, supporting the growing demand for healthier and safer living spaces.

By minimising solvent emissions, reducing coating costs, lowering baking energy consumption, and decreasing reliance on petrochemical raw materials, this innovation contributes to a cleaner environment and a more sustainable future. Its remarkable features earned the prestigious Ringier Technology Innovation Award 2023, solidifying our position as a leader in China's coatings industry.



ENVIRONMENTALLY RESPONSIBLE PRODUCTS



AQUATERRAS®: Pioneering Biocide-Free Marine Coatings

AQUATERRAS®, Nippon Paint Marine's biocide-free and self-polishing coating, received the prestigious Marine Technology Award at the Seatrade Maritime Awards in Shanghai. Using cutting-edge science, AQUATERRAS® helps customers reduce greenhouse gas emissions and fuel costs by improving operational efficiencies. Data indicates it delivers up to 10% fuel savings, showcasing our dedication to supporting greener operations, maximising efficiency, and safeguarding assets—all while aligning with the maritime industry's evolving sustainability goals.

ENVIRONMENTALLY RESPONSIBLE PRODUCTS



Excellent Bonding Adhesive Sealant complied with SCAQMD rule #1168

V-tech's VT-232 Eco Nails is a one-component, paste-like construction adhesive sealant formulated to bond a variety of common construction materials. Specially formulated to achieve superior performance and be environmentally friendly (APEO, Formaldehyde and Phthalate free). It complies with the stringent requirements of LEED v4.1 (Leadership in Energy and Environmental Design and SGBPLS (Singapore Green Building Product Labelling Scheme). VT-232 has initial solid grab, superior adhesion and will not slump on vertical surfaces. It is suitable for heavy-duty general construction, remodelling maintenance and repair projects.

Product features:

- Certified Green Adhesive
- Low VOC
- APEO-, Formaldehyde- and Phthalate free
- Non-drip paste
- Strong initial grab
- Bonds most materials



ENVIRONMENTALLY RESPONSIBLE PRODUCTS



Premium Elastomeric Hybrid Sealant Based on Advanced MS Polymer Technology with Excellent UV Resistance

VT-625/VT-625S Ultimate Construction Sealant is a general-purpose sealant formulated based on advanced MS Polymer technology. It has excellent UV and weathering properties and a matte finish. This sealant's low static charge attracts fewer dust particles and reduces dirt streaking issues on facade cladding. This elastomeric sealant is permanently elastic upon curing and has a movement capability of $\pm 50\%$, ensuring a high-performance and secure solution for your construction needs.

Specially formulated to achieve superior performance and feature low VOC emission and content, VT 625/VT-625S complies with the stringent requirements of ASTM C 920 and contributes to the Leadership in Energy and Environmental Design (LEED) v4.1 credit.

Unlike polyurethane sealants, VT 625 /VT-625S is free of solvents and isocyanates, preventing shrinkage and bubbling issues in the sealant after cure. It is also free of silicone oil, minimising building aesthetic issues caused by oil staining and dirt streaking problems often associated with silicone sealants. It has been tested and meets the requirements of ASTM C 1248, the standard test method for staining porous substrates by joint sealants.



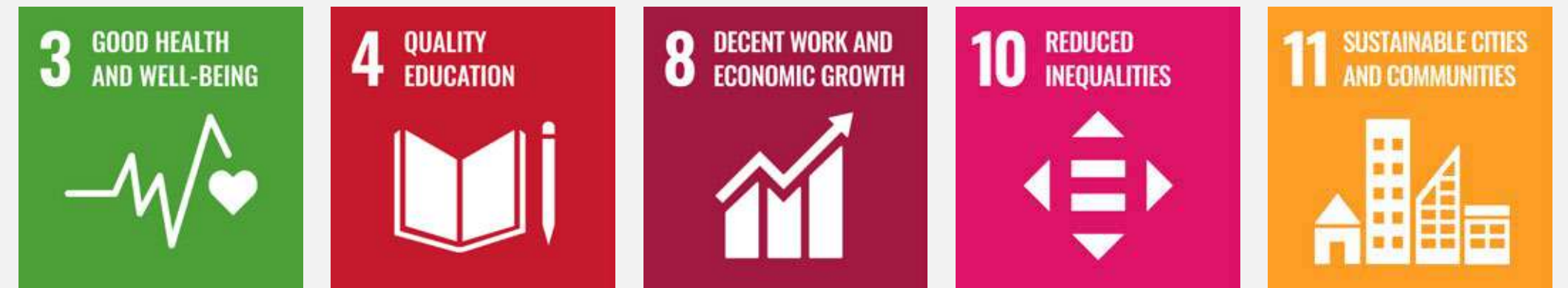
A top-down view of several hands of various skin tones stacked together in a circle. The hands are resting on a world map. The image is framed by a white, hand-drawn style border. The text 'COLOURING LIVES' is overlaid in white, bold, sans-serif font.

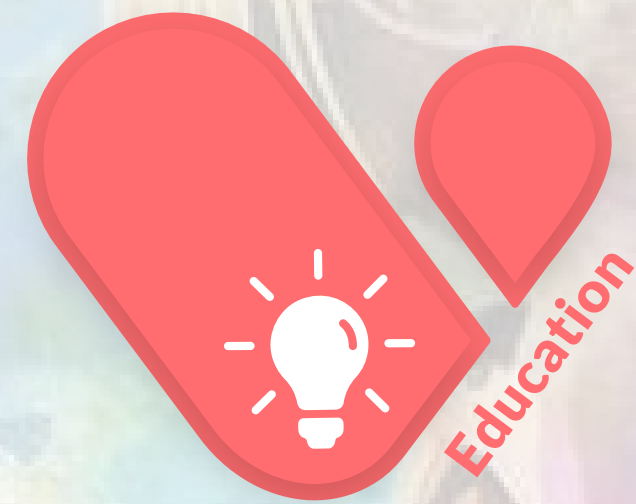
COLOURING LIVES



Nippon Paint's inclusive business approach aims to create tangible social impact in communities by 'Colouring Lives' in countries where we operate.

We focus on using our business' success to help improve the quality of life in countries where we operate. We are committed to growing community initiatives per United Nations' Sustainable Development agenda. Our priority is to invest in localized programs and tackle socio-economic challenges across three key CSR pillars: Education, Empowerment, and Engagement. Our continued collaboration with local governments, business partners, and NGOs demonstrate the significance of our commitment beyond philanthropy.





Education

Providing access to education for children and youths through establishing a collaborative learning platform and art & colour educational programmes.



Engagement

Health & Well-being
Enhancing the well-being of the communities we operate in and ensuring that livelihood needs are met, especially during emergency circumstances.

Protection & Preservation
Refurbishing communal spaces to improve living conditions and preserve the local cultural heritage sites.

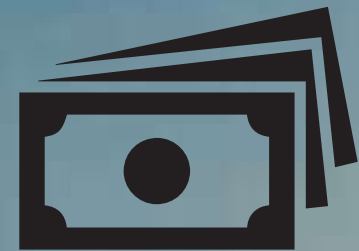


Empowerment

Equipping members of the community with skills and knowledge through vocational empowerment, training and certification programmes, as well as the facilitation of job opportunities.

OUR SOCIAL AND COMMUNITY IMPACT

Community impact at a glance
(2019 - 2023)



22,700,000
USD Committed



29,260,000
Lives Impacted



499,090
Hours Committed



43,213
Employees Engaged



2,790,000
Litres of Paint
Contributed



346
CSR Initiatives
Conducted





BUILDING PASSIONATE DESIGN COMMUNITIES

Since its launch in 2008, AYDA Awards has established itself as one of Asia's premier design awards, inspiring Architectural and Interior Design students to develop their skills through networking and experiential learning.

With over 59,000 entries from more than 1,200 institutions across 20 geographical locations globally, AYDA connects aspiring designers with industry leaders, offering invaluable insights and mentoring opportunities. Each year, this vibrant community fosters creativity and innovation, empowering the next generation of socially conscious designers.

Find out more



OUR COLOURFUL COMMUNITY AND CSR AROUND THE WORLD



Beca Kayuh (Pedicabs) Pasar Gede (Indonesia)



Earth Retaining Wall Coloring Project (Taiwan, China)



Wong Yiu Lam (Hong Kong, China)

See more initiatives



Wonders of Wilderness (Malaysia)



Sayangi Rumahku (Malaysia)



Student Jamboree (Sri Lanka)



Entrepreneur Young Painter (Türkiye)

